

Construction and Power
Distribution Enclosure
Solutions by EXM

SPLITTERS TROUGHS & BOX



#1412BCU



#1412BT



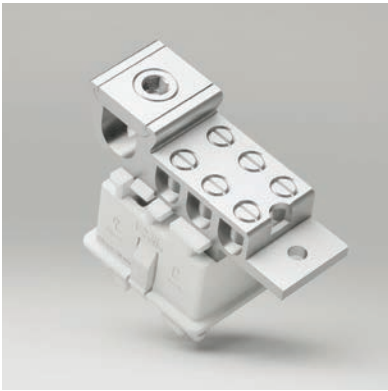
#1412BT



#1100BT

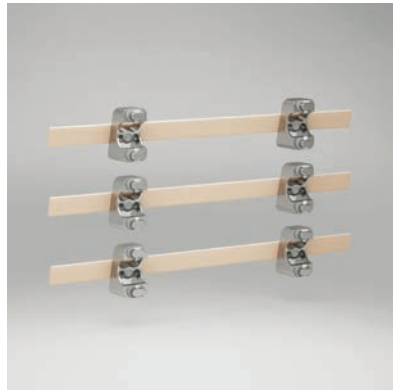
- Bus bar splitter troughs with aluminum and copper bus bars are offered, with covers secured by 1/4 turns (NEMA 4,12) and screw covers (NEMA 1)





Wire Connectors

- Splitter trough
- Splitter box



Distribution in Enclosures and Cabinets

- Choose from a wide variety of wire connectors for mounting on copper or aluminum busbars



All available for NEMA 1 to 4X

SEE OUR FULL LINEUP HERE

<https://exmweb.com/catalogue/en/#p=208>



#1400BSS



#1400T



#1100T

- Splitter trough and box offered with screw cover (NEMA 4,12) and a provision for padlocking (NEMA 1)

PULL BOXES



Grounding screws included



1. Concentric knockouts



2. No knockouts

The 1100 DF series are used as junction or pull boxes. These boxes are suitable for surface mounting with the standard screw cover or for flush mounting using either of the two optional covers. Boxes and covers are made of high quality 16 GA or 14GA steel. Four internal mounting holes, bonding screws and attachments are provided. All four sides have concentric knockouts, except when noted. These boxes are also available without knockouts. Enclosures are finished with ANSI/ASA 61 smooth gray heat fused powder paint, electrostatically applied on a pretreated.



SEE OUR FULL LINEUP HERE

<https://exmweb.com/catalogue/en/#p=184>

#1100E, 1100DF



3. Hinged cover with 1/4 turn locks



4. Pull box extension ring

PULL BOXES – OUTDOOR



#1300CH, 5300ES

Our outdoor pull boxes are specially designed for **outdoor wiring installations** in order to protect **against rain, sleet and snow**. Boxes can also be used indoors to protect against dripping water. The box and cover are made of high quality 14 GA or 16 GA steel. Boxes have a padlock provision. Enclosures are finished with heat fused powder paint, electrostatically applied on a pretreated base. Box is **ANSI/ASA 61 gray (other colors available)**.

CSA Certified / UL Listed NEMA / EEMAC 3R / IP32



SEE OUR FULL LINEUP HERE

<https://exmweb.com/catalogue/en/#p=241>

**NEMA 3R NOT ENOUGH?
CHECK OUT OUR NEMA 4 TO 4X OPTIONS**



#5300ES

- Weatherproof enclosures with **stainless steel padlockable draw pull catch**



#5300EWBDD

- Double Door weatherproof box with **ventilation system and extended dripshield**



#5300ES

- The top of the 1300 series enclosure serves as a **dripshield**



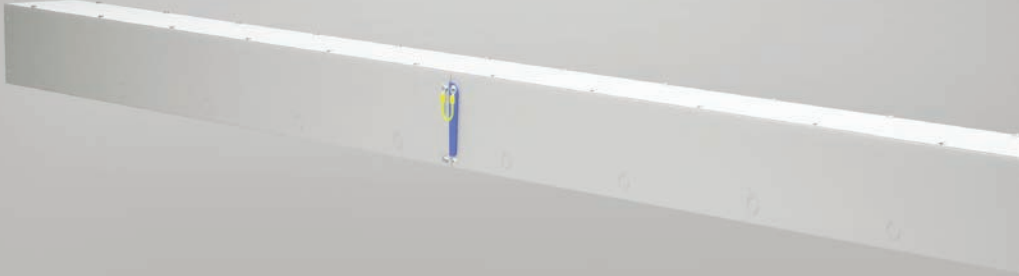
#880LPH

- Washdown hoods designed to maintain 4, 12 rating while providing air flow with **ventilation system**



WIREWAY

Painted mild steel and brushed stainless steel available



New foldable straight sections **NOW** available



Made for easy transport



#1150CR



#1100ELA



#1150EI



#1412NS

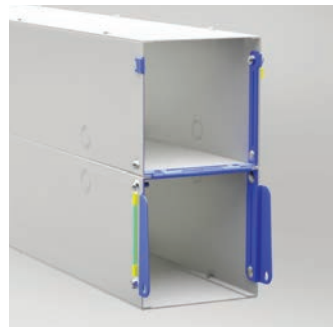
Discover our range of wireways, our offerings including closing plates, elbows, and nipples. Tailored to your needs, they ensure seamless cable management with our versatile options. Trust in our expertise to provide efficient solutions for your wiring requirements.



#1100SSF



- A ground wire connects to the folded sections



- Folding bracket



- A PEM nut on the inside for simple assembly



- Fully powder-coated finish



#1100SS



#1100CP



#1150JO



SEE OUR FULL LINEUP HERE

<https://exmweb.com/catalogue/en/#p=416>

If you would like to place a custom order, we offer BOXCAD for your convenience.

METERING CABINETS



#5300MCDD



#1100MCDD (NEMA 1 indoor model)

Manufactured for precision metering needs. Advanced features and customizable options ensure seamless integration and optimal performance.

Hydro



Our 3R version is built to withstand various weather conditions, these cabinets are specially designed for outdoor installation of metering transformers to protect against rain, sleet and snow.



SEE OUR FULL LINEUP HERE

<https://exmweb.com/catalogue/en/#p=231>



#1100MC

- Mounting holes are provided
 - Door are secured by a quarter-turn mechanism and tamper-resistant hinge
 - Finished with heat fused powder paint
-

NEMA 1 UTILITY ENCLOSURES



Each enclosure comes complete with a 14 GA galvanized **inner panel**, which mounts on welded nuts.

- The 5100 series is EXM's standard NEMA 1 offering for applications that are not required to be oil, water, and dust-tight. It comes standard with an inner panel.



- The 1100 series is a NEMA 1 rated enclosure that also comes standard with an inner panel. It is a price-friendly alternative to the 5100 for applications that do not require as sturdy a build.



OTHERS



Telephone cabinets

- Three different cover options are attached available and can be to the main body



**SEE OUR FULL
LINEUP HERE**

<https://exmweb.com/catalogue/en/#p=199>



Wide variety of different lock inserts



Hexagon



Double bit



Square



Triangle



**All available in both plastic
or zinc die cast
SEE OUR FULL
LINEUP HERE**

<https://exmweb.com/catalogue/en/#p=514>

NEED NON-METALLIC BOXES?



Fiberglass Enclosures

- Made of UV resistant fiberglass
- NEMA 4X



**CHECK OUT OUR
FIBERGLASS
LINEUP HERE**

<https://exmweb.com/catalogue/en/#p=392>



Polyester Enclosures

- Made of UV resistant polyester
- NEMA 6P



**CHECK OUT OUR
POLYESTER
LINEUP HERE**

<https://exmweb.com/catalogue/en/#p=400>

Wide Range of Products

EXM offers a wide variety of turnkey solutions and products for all electrical installation needs. Everything from standard sized pull boxes to custom splitter troughs and everything in-between. **We have you covered, for all NEMA ranges and with all appropriate certifications.**



Wide variety of solutions
(NEMA 1 to 4X)



Certified



Consistent inventory



Turnkey solutions



Full line of accessories



Local support and
Customer care





BOXCAD

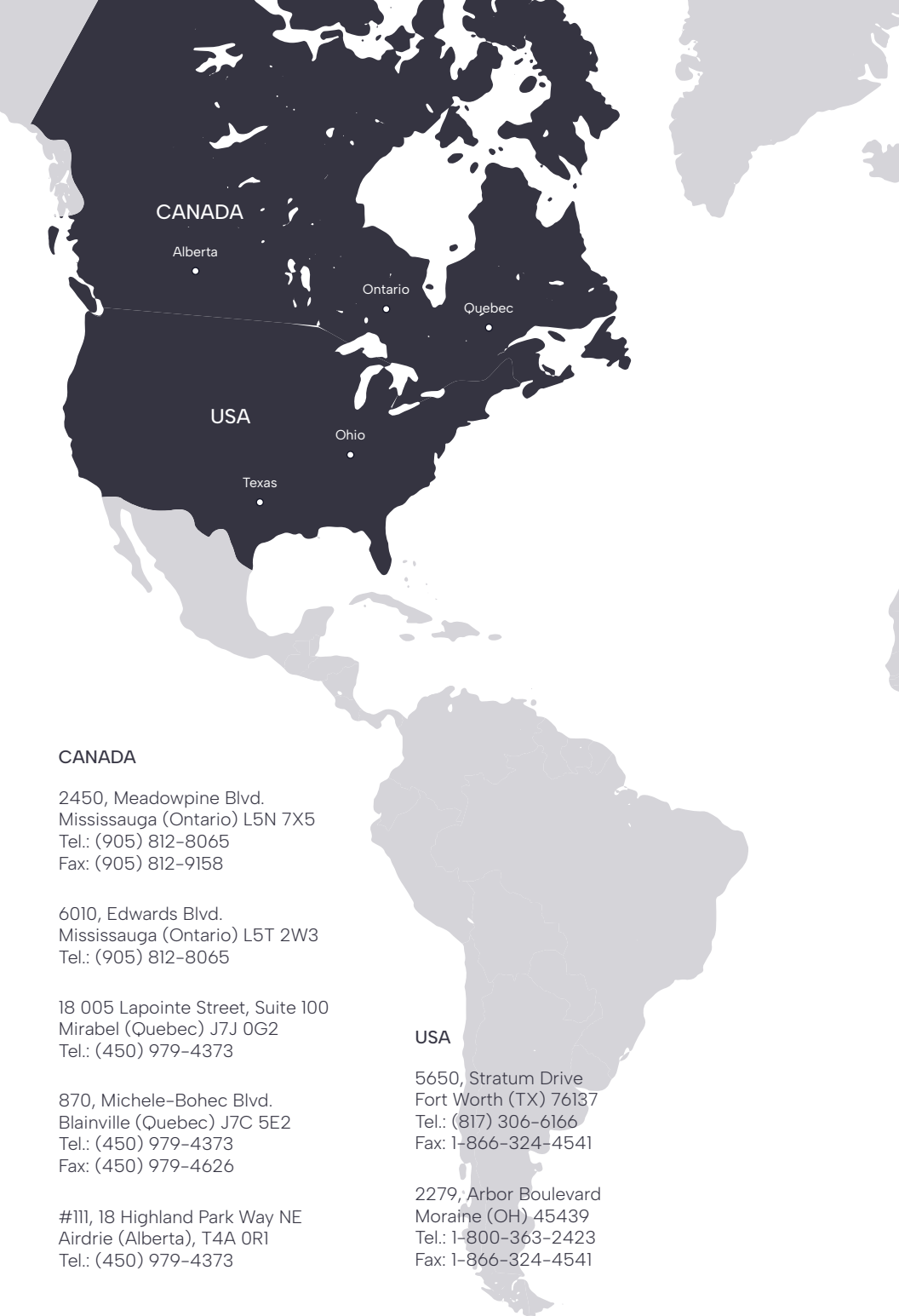
Customization Services

Customize your enclosure precisely and easily for your needs with our expert team or do it yourself on BOXCAD exclusively and free of charge on the EXM website.



**NEED A HIGHER RATED ENCLOSURE?
CHECK OUT OUR LINEUP FROM NEMA 3R TO 4X?**

<https://exmweb.com/catalogue/en/#p=239>



CANADA

Alberta

Ontario

Quebec

USA

Ohio

Texas

CANADA

2450, Meadowpine Blvd.
Mississauga (Ontario) L5N 7X5
Tel.: (905) 812-8065
Fax: (905) 812-9158

6010, Edwards Blvd.
Mississauga (Ontario) L5T 2W3
Tel.: (905) 812-8065

18 005 Lapointe Street, Suite 100
Mirabel (Quebec) J7J 0G2
Tel.: (450) 979-4373

870, Michele-Bohec Blvd.
Blainville (Quebec) J7C 5E2
Tel.: (450) 979-4373
Fax: (450) 979-4626

#111, 18 Highland Park Way NE
Airdrie (Alberta), T4A 0R1
Tel.: (450) 979-4373

USA

5650, Stratum Drive
Fort Worth (TX) 76137
Tel.: (817) 306-6166
Fax: 1-866-324-4541

2279, Arbor Boulevard
Moraine (OH) 45439
Tel.: 1-800-363-2423
Fax: 1-866-324-4541