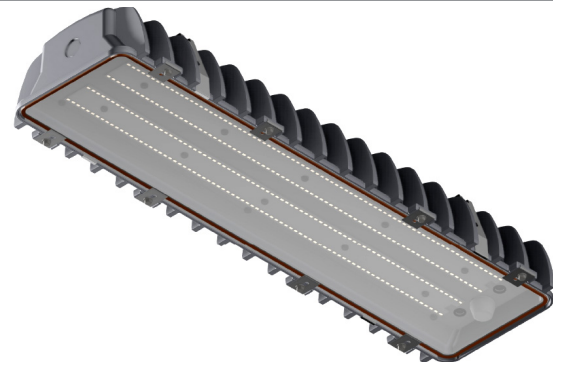


Project:
Type:
Date:
Product Code:
Approval:



**BHZ**

Designed to efficiently light harsh and hazardous applications, the BHZ's rugged design delivers a lighting solution that delivers high performance in all Class 2, Div. 1 Groups E, F and G environments.

**FEATURES**

- High temperature rated silicone gasketing to keep dust out of the fixture
- 0 - 10V dimming standard
- Stainless steel linear lens mounting clips

**OPTIONS**

- Cord options for Flexible cord, Flexible conduit and rigid conduit available
- Lumen packages are available from 2,500L to 11,500L
- Available in 3000K, 3500K, 4000K, 5000K, and 6500K
- 90 CRI available
- NEDAP wireless controls

**OPERATING TEMPERATURE**

- -20°C to 40°C

**APPLICATIONS**

For use in applications where a Class 2 Div. 1 Group E, F, and G fixture is required.

**OPTICS**

Laminated glass lens designed for maximum durability in rugged environments.

**ELECTRICAL**

All components are UL recognized. This fixture is available in 120 - 277V and 347V/480V.

**MOUNTING**

Suspension, or surface mounting options available.

**CONSTRUCTION**

- Cast aluminum body 1/8" thick body with high temperature silicone gasketing
- Conduit knock-out holes in both ends and the top of casting
- Tempered glass lens

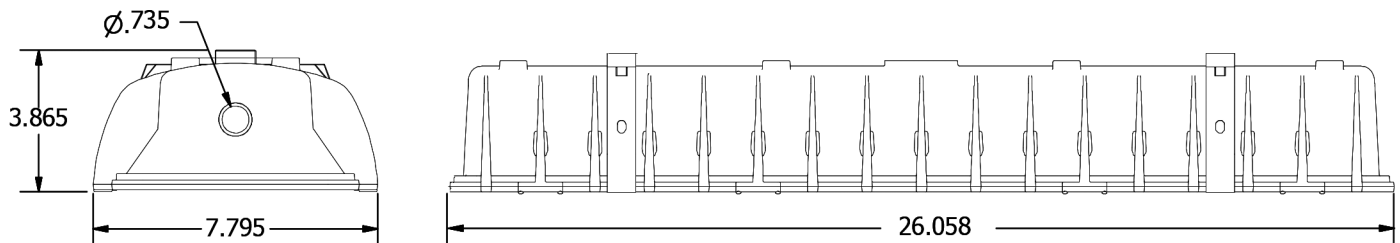
**APPROVALS**

- Class 2 Division 1 Groups E, F, and G
- ETL Listed
- DLC Listed

**WARRANTY**

- Standard 5 year system, and 10 year LED warranty

**PRODUCT DIMENSIONS**



\*specifications may change without notice



### PRODUCT KEY

Fixture Type	Lumen Output	CRI	Color Temp	Driver Voltage	Options										
BHZ															
	2.5	8 - 80 CRI	30 - 3000 K	UNV - 120-277V	<b>Cords (Specify Length)</b> W3xx - 16/3 White Cord <sup>1</sup> W4xx - 16/3 Black Cord <sup>1</sup> W** - Other Options Available <table border="1"> <thead> <tr> <th>XX</th> <th>Cord Length</th> </tr> </thead> <tbody> <tr> <td>06</td> <td>6 Ft</td> </tr> <tr> <td>10</td> <td>10 Ft</td> </tr> <tr> <td>15</td> <td>15 Ft</td> </tr> <tr> <td>20</td> <td>20 Ft</td> </tr> </tbody> </table> Example: W306 - 6 foot white cord	XX	Cord Length	06	6 Ft	10	10 Ft	15	15 Ft	20	20 Ft
XX	Cord Length														
06	6 Ft														
10	10 Ft														
15	15 Ft														
20	20 Ft														
	3.5	9 - 90 CRI	35 - 3500 K	347 - 347V											
	4.5		40 - 4000 K												
	5.5		50 - 5000 K												
	6.5		65 - 5000 K												
	7.5														
	8.5														
	9.5														
	10.5														
	11.5														

**Controls**  
 B11 - 0-10V Dimming Leads  
 WC\*\* - Wireless Controls

**Mounting**  
 Blank - Stainless Steel Surface Mount Brackets

\*\* - Consult BJ Take for more fixture options  
 xx - Specify Length  
 1 - Custom cord lengths are available

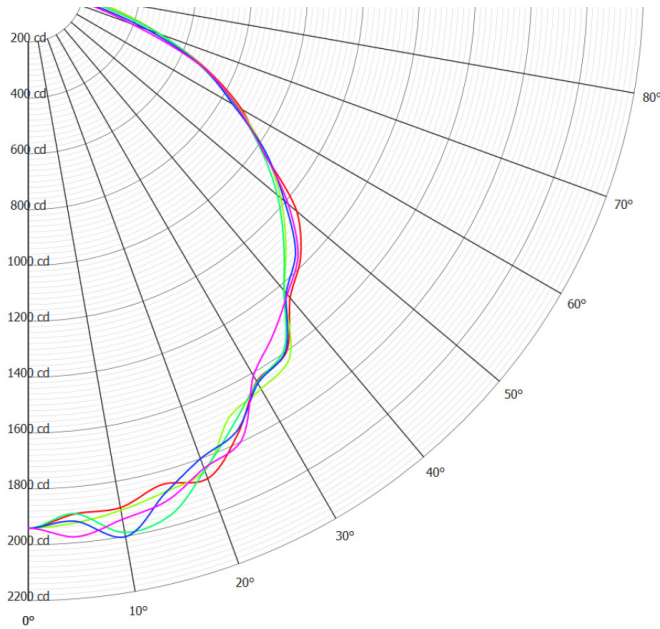
### WATTAGE CHART

	Lumen Output	Actual Lumen Output	Fixture Wattage	Lumens per Watt
2'	2.5	2,559	18.85	135.76
	3.5	3,512	25.87	135.76
	4.5	4,465	32.89	135.76
	5.5	5,418	39.91	135.76
	6.5	6,464	46.93	137.74
	7.5	7,418	53.90	137.63
	8.5	8,372	60.79	137.72
	9.5	9,326	67.71	137.73
	10.5	10,195	74.64	136.59
	11.5	11,234	81.57	137.72

Based on UNV Voltage  
 Based on 4000K  
 Based on 80 CRI

**PHOTOMETRIC DATA**

Candela Polar Plot



**BHZ-5.5L-840-UNV**

Cone of Light

Mtg Height	Light Level	Beam Diameter
6 ft	54 fc	18 ft
8 ft	30 fc	23 ft
10 ft	19 fc	29 ft
12 ft	13 fc	35 ft
15 ft	9 fc	44 ft

**BHZ-10.5L-840-UNV**

Cone of Light

Mtg Height	Light Level	Beam Diameter
6 ft	108 fc	17 ft
8 ft	60 fc	22 ft
10 ft	39 fc	28 ft
12 ft	27 fc	33 ft
15 ft	17 fc	41 ft